

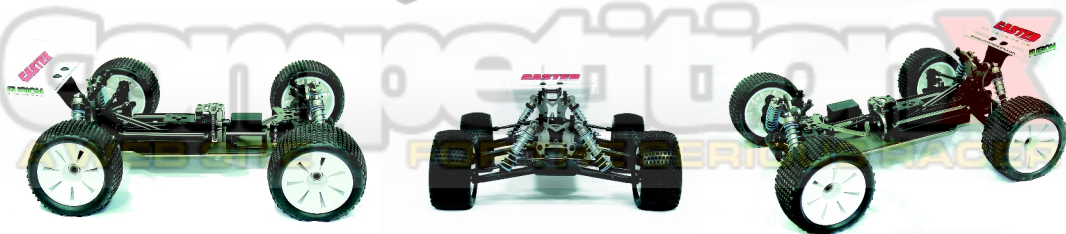
*manual*

# TEAM **caster** RACING

**F1** 1/8th 4WD ELECTRIC TRUCKY



- ▲ 100% Pre-built
- ▲ Pistol grip transmitter with servo reverse and EPA function
- ▲ High torque ball raced steering servo 9kg
- ▲ 24 Rubber sealed ball bearings
- ▲ Countersunk T6 CNC-machined aluminium chassis
- ▲ CNC-machined T6 aluminium radioplate
- ▲ CNC-machined T6 aluminium center diff.plate
- ▲ CNC-machined T6 aluminium servo saver plate
- ▲ CNC-machined T6 aluminium rear shock tower
- ▲ CNC-machined T6 aluminium front shock tower
- ▲ Glassfibre reinforced chassis stiffener FR&RE
- ▲ Rear anti-roll bar
- ▲ CVD universal joints front
- ▲ 3 differentials with 6 planetary gears
- ▲ Steel bevel gears
- ▲ 4 hydraulic hard coated aluminium constant volume shock absorbers
- ▲ Moulded side guards
- ▲ Dust proof receiver box
- ▲ Adjustable wing mount
- ▲ Pre-painted polycarbonate body



[WWW.CASTERRACING.COM](http://WWW.CASTERRACING.COM)



## Please read all instructions thoroughly before assembling the kit.

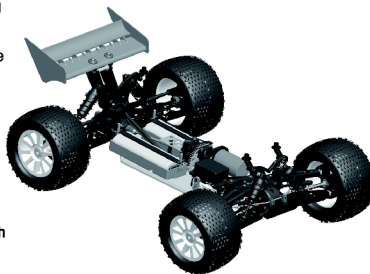
The contents are subject to change without prior notice due to product improvement and specification change.

# CASTER

### Performance Features of the Fusion F8T Kit

- Extreme Low Diff. CG.
- Pro Steering Geometry Angle
- Two piece Pro Center Diff. mount
- Anodized Aluminum Radio Plate
- CNC Spur, Crown and Pinion Gears
- Shock Shaft 3.5mm
- Extreme Light Diff. system.
- Anodized F / R Aluminum Arm Holder
- 3.2mm Anodized Main Chassis
- Optional Shock Springs included.
- Low Profile Radio Box
- Front CVD
- Increased suspension travel to 7cm
- Lower CG Design through out the car
- Lay Down Steering Servo
- Full Ball Bearing through out the car
- Pro Turnbuckles
- Pro Brake Pad

Thank you and congratulations on your purchase of the Caster Racing Fusion F8T 1/8th radio controlled model. Please read through this instruction manual carefully before you attempt to assemble or operate your Fusion F8T truggy kit. This manual contains building steps and instructions you will use to set up your RTR, KIT and Pro Fusion F8T buggies. Follow the directions in this manual closely and take the time to study, reference and understand your Fusion F8T manual is the key to ensure the maximum performance and longevity from your new Fusion F8T. We hope that you will enjoy your new Caster Racing Truggy. If you ever have any questions or need help with your Fusion F8T please feel free to contact our official Caster Racing dealers and distributors, as they will always be happy to help you. Good Luck and Enjoy the Racing Fun.



#### TECHNICAL INFORMATION (RTR)

- 3 Diff. Shaft Drive 4WD
- CVD (Front)
- Anodized Shock Body w/ 3.5mm shaft
- A6061 (T6) 3.2mm Main Chassis
- A6061 (T6) 3.2mm F/R Shock Tower
- Receiver & Battery Box
- Anodized (T6) Radio Plate
- Anodized (T6) Center Diff. Mount Plate
- Anodized (T6) Steering Plate
- 2pcs. Center Diff. Mount
- CNC Diff. Gears
- Clear Body
- Length : 535mm
- Width : 422mm
- Height : 240mm
- Wheel Base : 370mm
- Gear Ratio : 13.9: 1
- Weight : About 3200g

# CASTER

3



## CAUTION!!!

**Thank you for purchasing a Caster Racing Product.  
Please read all instructions and familiarize yourself with the products and control before operation.**

1. This product is not a toy. It is a high performance model product. It is important to familiarize yourself with the model, its manual, and its construction before assembly and operation. Adult supervision is necessary.
2. Always keep this instruction manual handy for your assembling and operation reference, even after completing the assembly.
3. Make sure all the screws are properly tightened and all the parts are checked after running the car for a long period of time.
4. For the best performance, it is important to make sure all the moveable parts work free without binding.
5. Do not operate model products in rain, on public roads, near crowds, near airport, or near areas with restricted radio operation.
6. Always keep batteries away from heat and open flame. Only operate in open areas.
7. This product, its parts and its construction tools can be harmful to your health. Always exercise extreme caution when assembling or operating this product. Do not touch any moving parts of the model while operating.
8. Check your radio frequency with the proper operating frequency of the area or country. Always check to see if there are any modelers operating on the same frequency as yours. Also Check your radio for proper operation before operating a model.

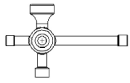
4

# CASTER

# Required Equipment for Assembly

## Tools not included in Kit

Cross Wrench



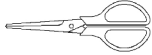
Pliers



Needle Nose Pliers



Hobby Scissors



Hobby Knife



Philips Screwdriver(#0,#1,#2)



## Included Tools

1.5mm Allen Wrench



2.0mm Allen Wrench



2.5mm Allen Wrench



3.0mm Allen Wrench



R/H 3x6mm



F/H 3x6mm



R/H 3x8mm



F/H 3x8mm



R/H 3x10mm



F/H 3x10mm



R/H 3x12mm



F/H 3x12mm



R/H 3x16mm



F/H 3x15mm



R/H 3x20mm



F/H 3x20mm



R/H 3x23mm



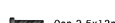
F/H 4x8mm



R/H 3x28mm



F/H 4x10mm



Set 3x3mm



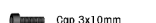
Cap 2.5x12mm



Set 3x5mm



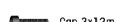
Cap 2.5x20mm



Set 3x12mm



Cap 3x10mm



Set 4x4mm



Cap 3x12mm



Set 4x8mm



Cap 3x23mm



Set 5x5mm



R/H 4x8mm



F/H 4x16mm



F/H 4x20mm



Notice: The below items are needed for completion of the Fusion F8T.(KIT, PRO KIT) They are not included with this kit (unless noted). And should be obtained from your local hobby shop.

## Additional items needed for Completion



Radio



ESC



AAx8 Alkaline Batteries for Transmitter



Battery



Motor



Servo  
9kg A-9849 Analog  
9kg C-9850 Digital  
13kg C-9851 Digital

**CASTER**

5

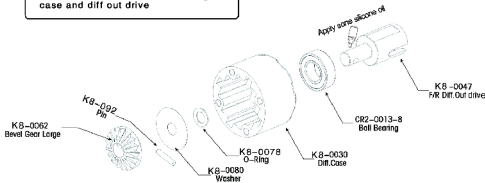
## Assembly of the Front & Rear differentials

**FUSION F8T**

1

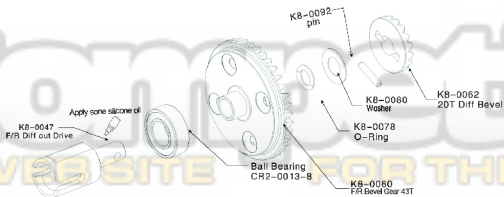
Assemble 2 Sets

Front and Rear has the same diff gear case and diff out drive



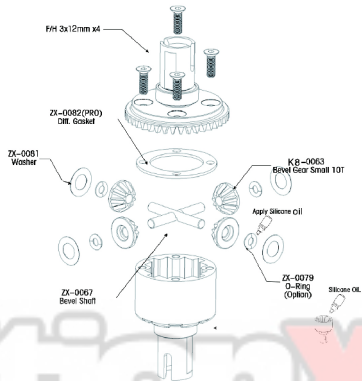
2

Assemble 2 Sets



3

Fill up with silicone oil after you have installed the gear sets in the gear box.



Fill differential's using standard set up  
Front: Silicone Oil 3000  
Mark gear box as FRONT  
Apply some grease on the O-Ring.

④ F8T Kit (PRO KIT) (PRO KIT) (KIT) (KIT)  
④ Quick Part for Differential Drivings Setting

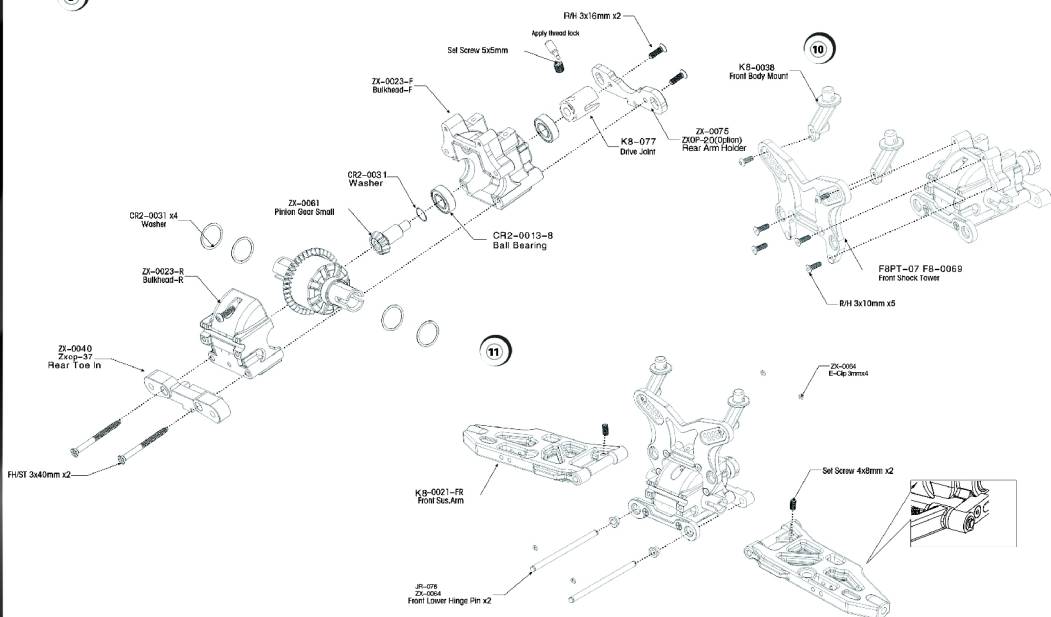
6

**CASTER**





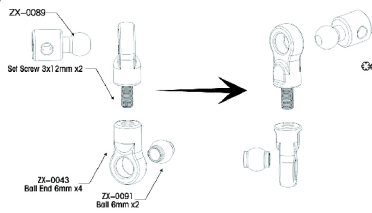
9



**CASTER**

9

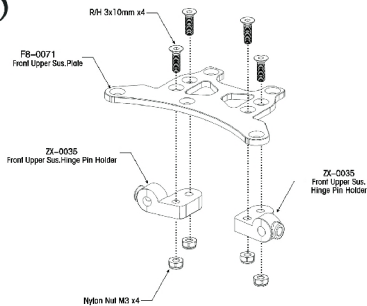
12



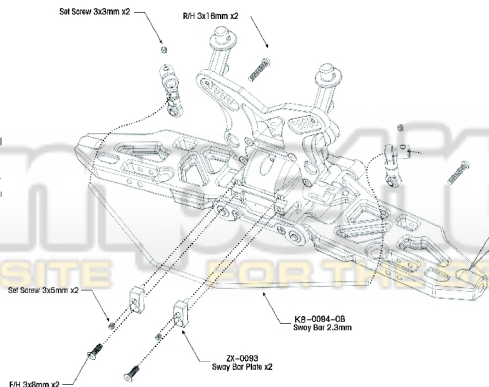
Assemble 4 Sets Sway Bar Mounts. Tighten the ball ends until they fit and adjust so that they meet at 90 degree angle to each other.

Sway Bar Set Screw should not be tightened to the point of causing the sway bar to bind. Check to make sure the sway bar (63-11134) rotates freely. From the sway bar mounts, mark the Set Screw 3x5mm.

13



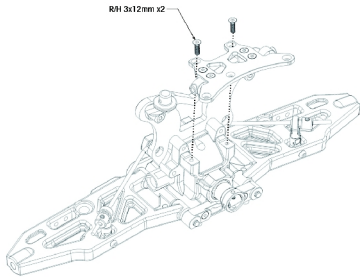
Front Upper Suspension Place the support plate over the front upper arm holder. Place the two pieces over the front bulkhead assembly, lining up the holes. Fasten the screws.



**CASTER**

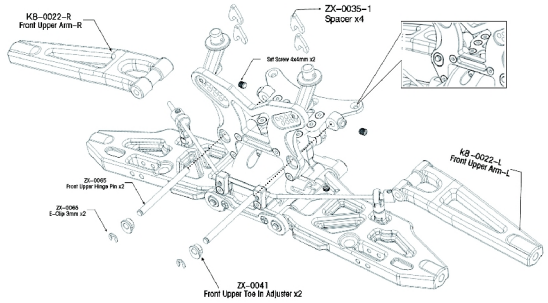
10

14



15

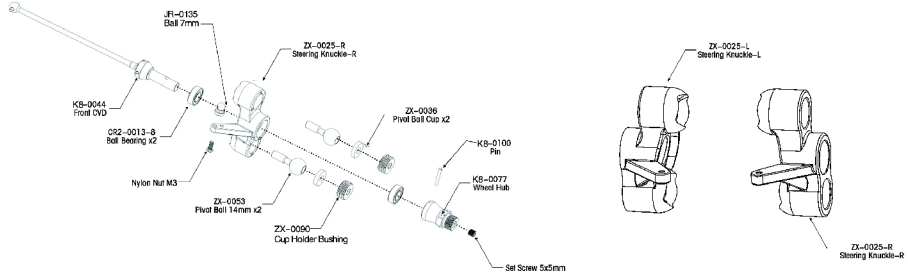
- Front Upper Arms**  
 Place the Hinge Pin through the Front upper Toe-In adjuster. Attach e-clips to the end of each upper hinge pin in the groove. Place the arms between the shock tower and upper arm holder. Slide the pins into the front upper suspension holder. After sliding the pins between the shock tower and upper arm holder, make sure the 15° pin fits into the Hinge Pin Holder. Tighten the bottom set screw. Check for the movement of the upper arms.



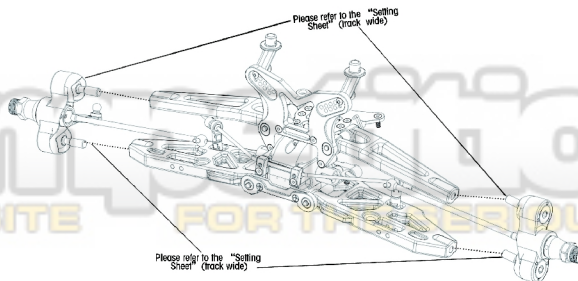
11

Assemble both right and left sides

16



17



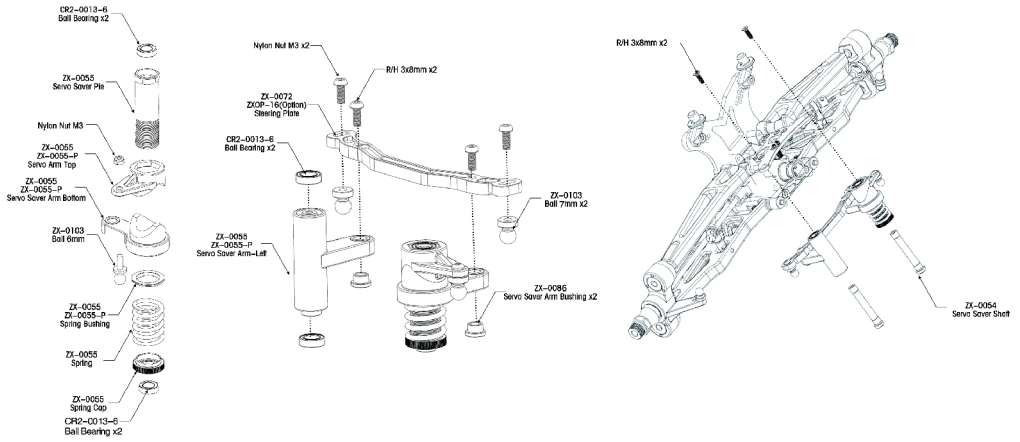
12

11

Assembly of the servo saver

**FUSION** *FBT*

18



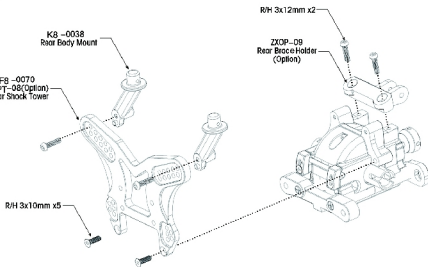
**CASTER**

19

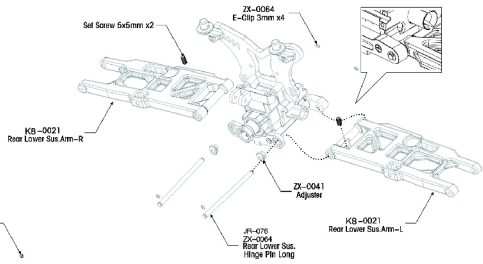
Assembly of the Rear suspension

**FUSION** *FBT*

20

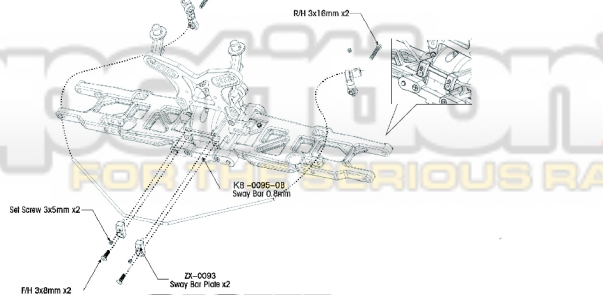


21



22

⚠️ Sway Bar Set Screw should not be tightened to the point of causing the sway bar to bind. Check to make sure the sway bar (KH-0093) rotates freely. Fasten the sway bar mounts using the Set. 3x5mm



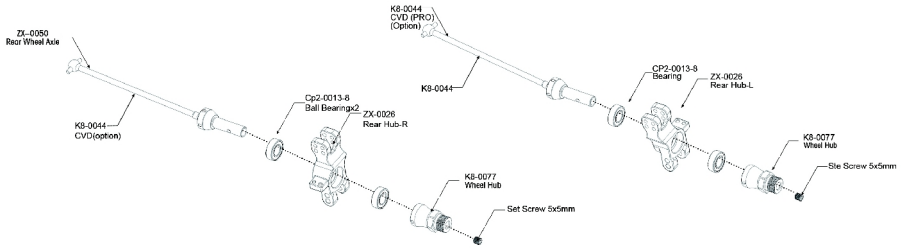
**CASTER**

14

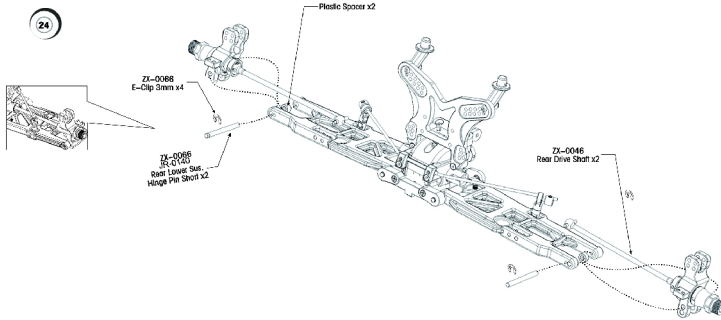
Assembly of the Rear suspension

**FUSION** 

23



24



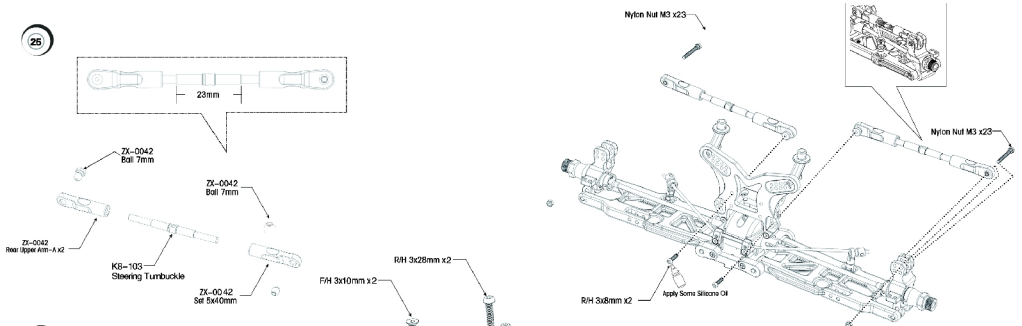
**CASTER**

16

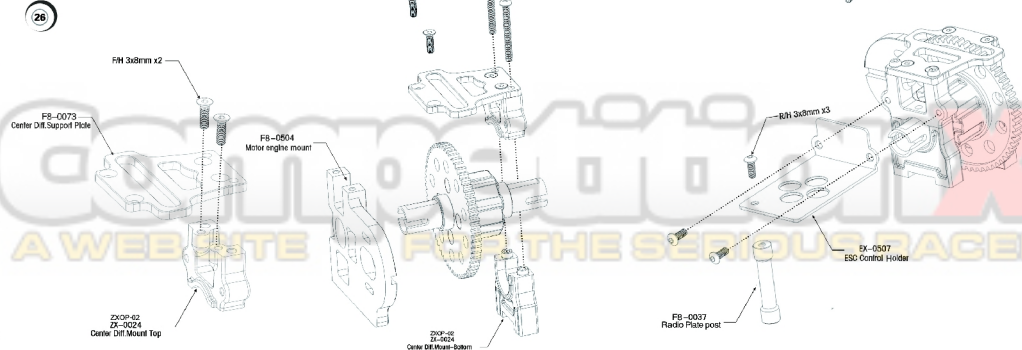
Assembly of the CENTER gearbox

**FUSION** 

25



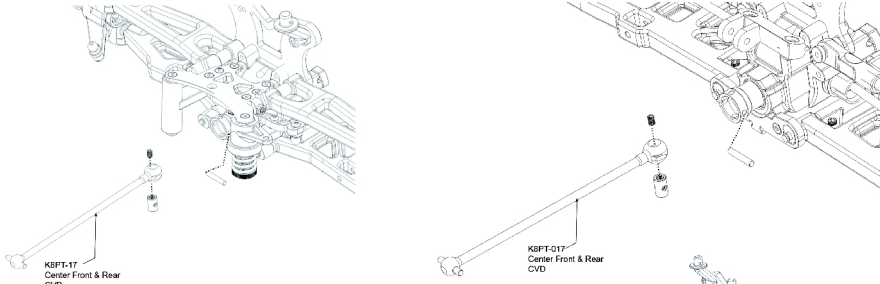
26



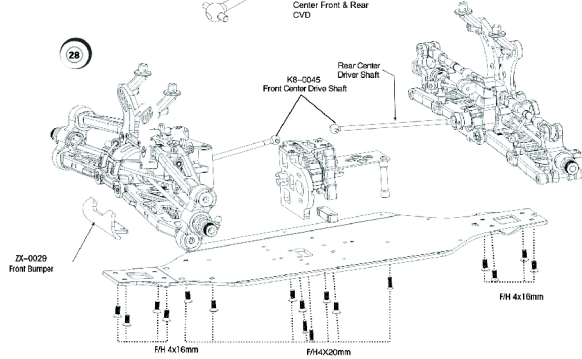
16

**CASTER**

27



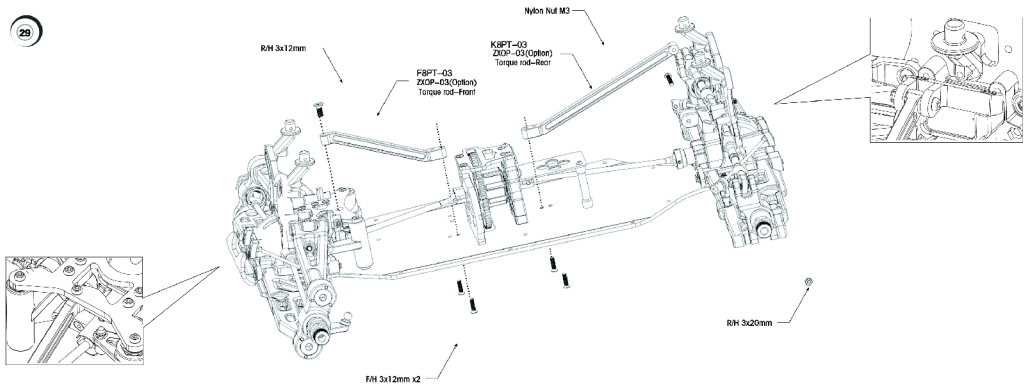
28



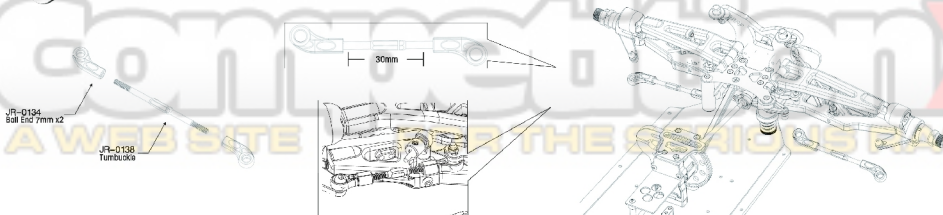
## CASTER

17

29



30



18

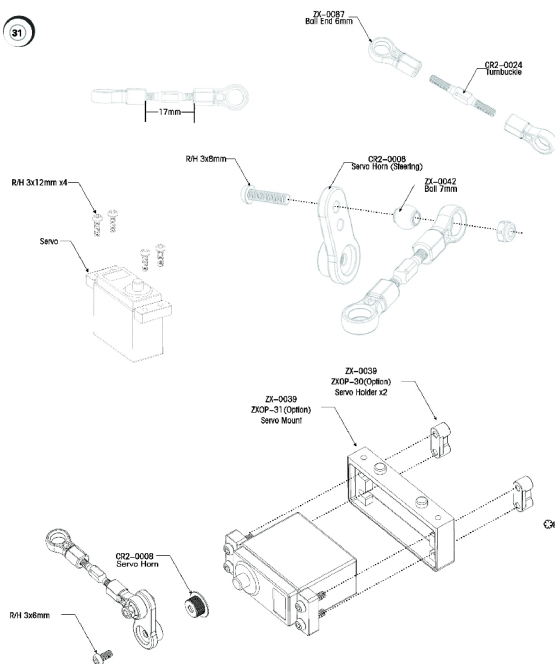
## CASTER



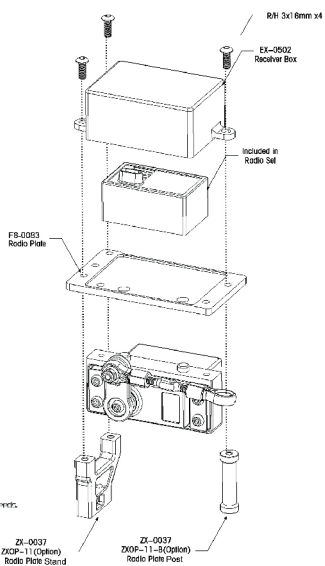
Assembling the radio plate

**FUSION** *FBT*

31



32



Suggestion: You can switch the steering servo to "INSIDE" or "OUTSIDE" to suit your driving needs.

**CASTER**

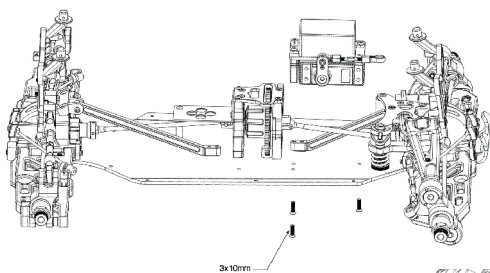
10

Assembling the radio plate and motor

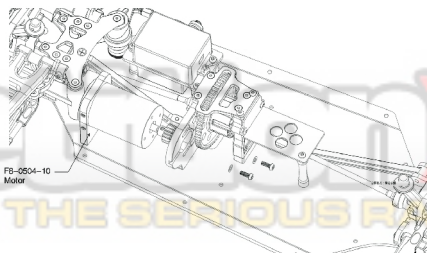
**FUSION** *FBT*

33

Assemble 2 Sets



34



Suggestion: You can switch the steering servo to "INSIDE" or "OUTSIDE" to suit your driving needs.

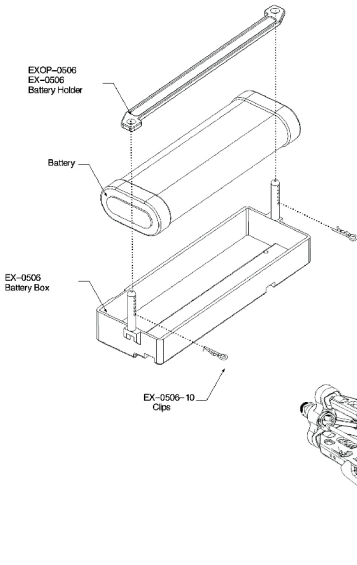
FB-0004-10  
Motor

**COMPETE** **X**  
A WEB SITE FOR THE SERIOUS RACER

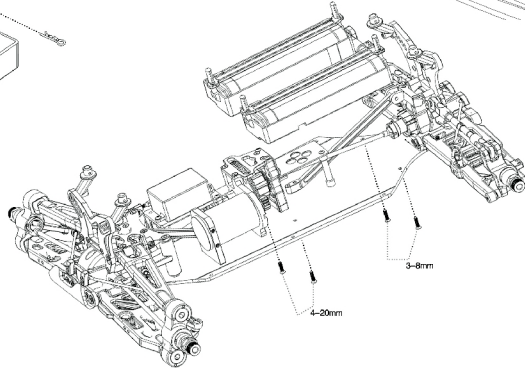
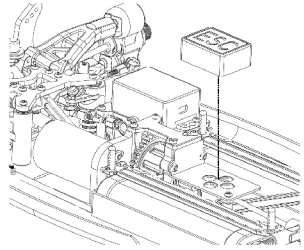
20

**CASTER**

36 Assemble 2 Sets



36

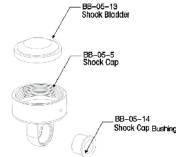


**37** Front Shock  
Slide the WS266030 washer over the stepped end of the shock shaft. Place the Piston over the shaft and washer. Tighten the piston in place using the lock nut. Make sure you don't over-tighten the piston, it will cause damage on the shape of the piston. Repeat for the 4 other shock shafts.

Apply a drop of Shock Oil to the O-rings. Place the O-ring, followed by Shock Collar, another O-ring followed by Shock Collar again. Gently press the Shock Collar to seat the parts in the shock body and under the small groove. Carefully place the G-Ring in the shock body and snap into the groove.

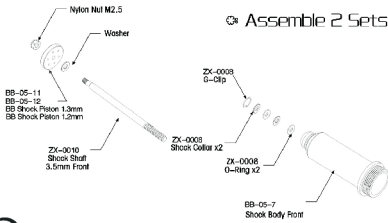
Apply a drop of Shock Oil to the threads of the shock shaft. Gently slide the shock shaft through the shock body. Tighten the shock shaft ball end to the top of the threads. Snap the 6mm Ball into the Ball End.

39 Assemble 4 Sets Use Shock Oil #400



Apply a drop of Shock Oil to the Shock Bladder. Spread the oil all around the bladder. Carefully seat the bladder in the shock cap, press the threads. Slide the shock cap burring into the shock cap.

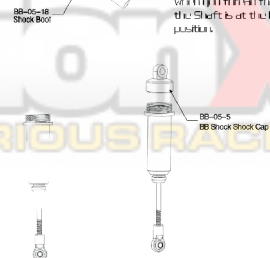
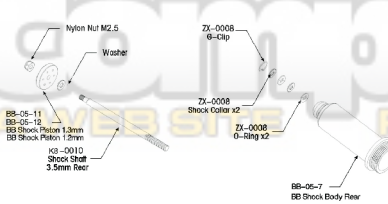
38 Assemble 2 Sets



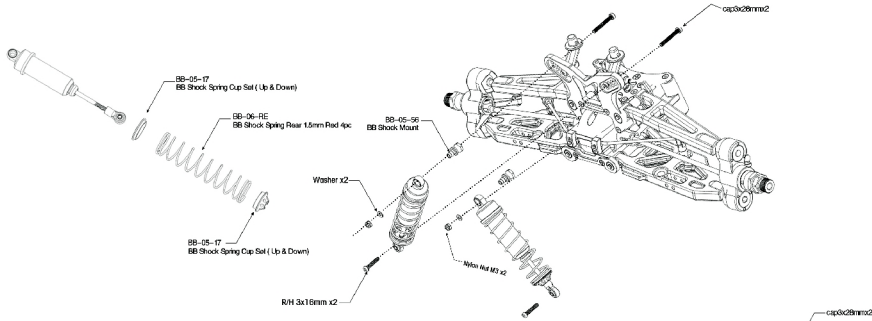
Push the shock shaft to the bottom and fill the shock oil to fill. Push the Shock Shaft all the way to the top (slowly). And then pull the shaft back down very very slow to bottom. Repeat. This process at least twice, to make sure that there will be no air bubbles.

Make sure there isn't any air bubbles in the shock. You can start to move the Shock Cap. Make sure with a good hand that the cap, the shafts are at the bottom position.

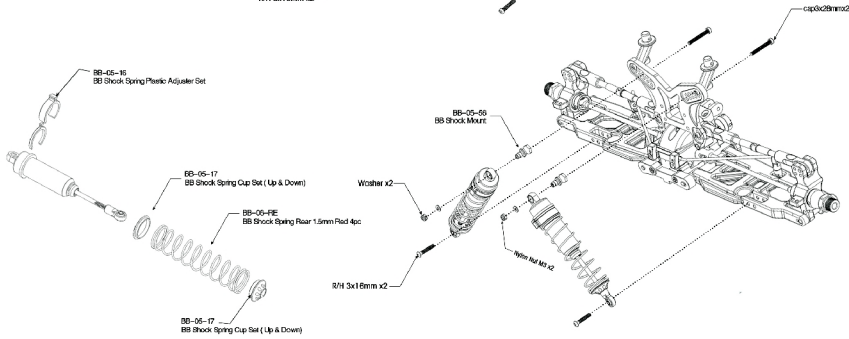
38 Assemble 2 Sets



40



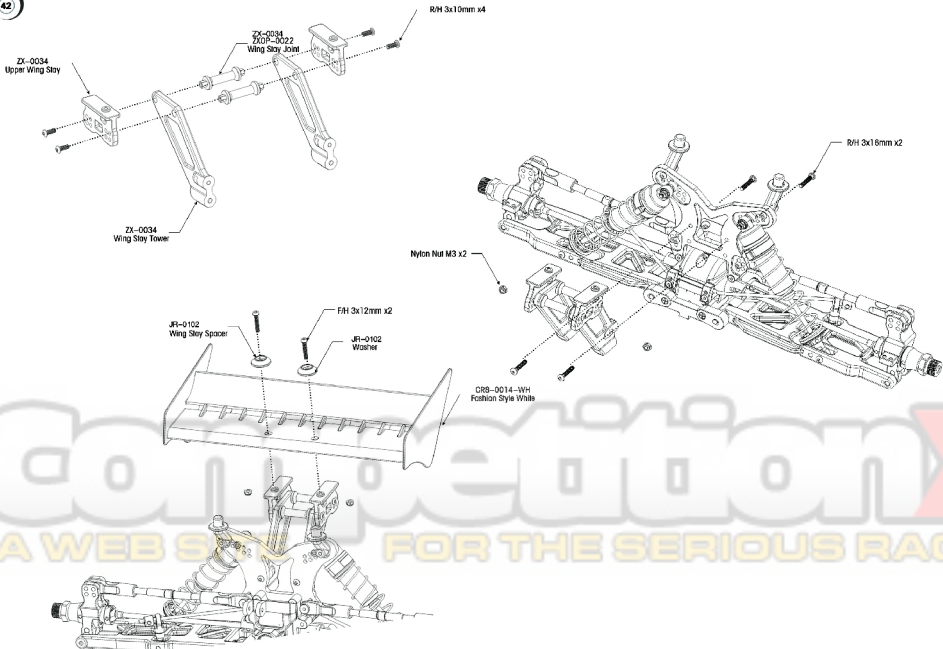
41



## CASTER

22

42

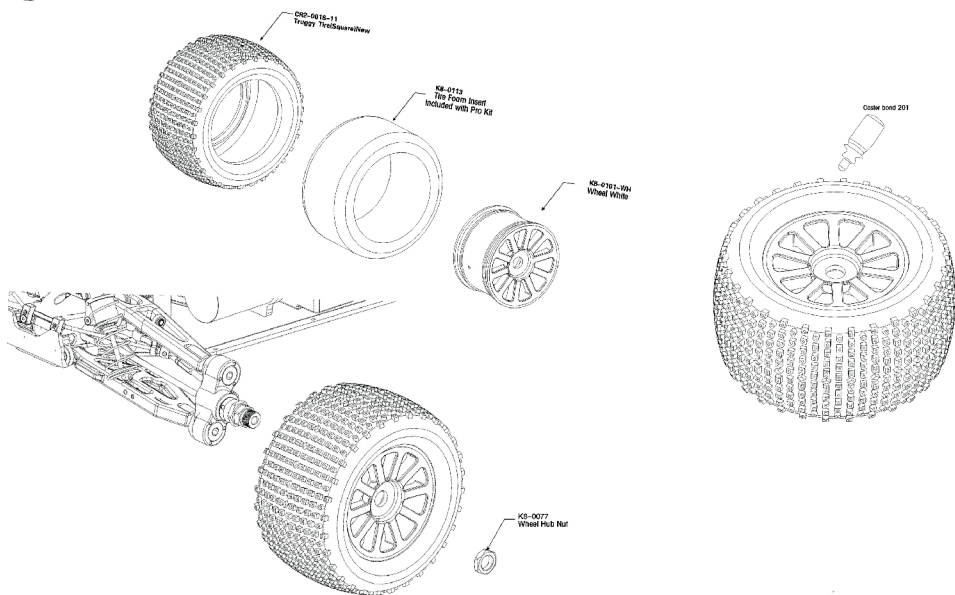


24

## CASTER

**Collection X**  
A WEBSITE FOR THE SERIOUS RACER

43



25

### Tips and guide for running your Fusion F8T

Congratulations on your purchase of the Caster Racing Fusion F8T .Your new Fusion F8T should provide you with several years of high performance excitement with proper use and maintenance. Since it is a high performance vehicle,adult supervision is recommended for anyone under the age of 16. Depending on the parts you use, it is capable of speeds up to 70mph and can cause injury or even death if used in an unsafe manner.

The Fusion F8T Sport will require some additional parts. Getting the proper electric motor, electronic speed controller, and batteries are vital to its performance. You will have several choices and we have made several recommendations on our website. Please go to [www.casterracing.com](http://www.casterracing.com) and join the forums for details. Improper parts will cause poor performance, excessive wear, and potential damage to your Fusion F8T . Make sure you follow recommendations and directions provided.

1. Use only the parts recommended by Caster Racing and get them from a reputable hobby store. Using parts from other devices could result in damage to your Fusion F8T . There could be a potential risk of electrical shortage, battery explosions, or even fire if you install or use these parts improperly.
2. Always follow the manufacturers instructions for charging, discharging, programming, and usage and adhere to all safety rules they provide. Make sure there are no potential short circuits and make sure the batteries are properly charged before use.

### Radio System:

In order to run your Caster Fusion F8T without any loss of control. Please make sure you have checked the following requirements

1. It is important that all the batteries are fresh or fully charged.
2. Always check the path and the condition of the battery pack wires as well as the switch wires. A broken wire can cause a short circuit and lead to loss of control.
3. Turn on the transmitter, and then turn on the car receiver battery pack switch to check the steering servos movement and the esc controller operation
4. Turn the steering wheel on the transmitter left and right. The front wheels should turn left and right (when viewed from behind). Use the steering trim adjustment to set the neutral (wheels pointing straight ahead) setting on your car. If your servos move very slowly, check your batteries.
5. Pull the throttle trigger, the wheels should spin forward. Push the throttle trigger forward. This will activate the brakes. Please use the throttle trim adjustment to set the neutral setting on your car. (Read the instructions that come with your radio.)
6. If the vehicle is not responding in regards to movement, double check your wiring and refer to the trouble shooting manual of your electronic speed controller. Otherwise, call our phone number or go online for tech support.

26

### **Warning!!!**

1. Improper operations may cause personal and/or property damage. Caster Racing and its distributor have no control over damage resulting from shipping, improper construction, or improper usage.

### **Motor:**

For proper motor break-in procedure, please refer to the manual of your motor and electronic speed controller.

1. Never run your vehicle without the batteries properly charged and maintained.
2. The parts around and including the motor could be dangerously hot after operation. Do not touch it without any protection!

### **OPERATING YOUR FUSION RC CAR:**

The 1/8th scale electric car runs at a very fast speed, and uses expensive parts. It is designed for r/c racing applications and is not a toy. Operate the model in the area with safety in mind. Make sure there is no personal injury, no property damage, and there are no accidents.

### **Checklist Before Running**

1. Be sure to tighten screws securely and install all parts.
2. Ensure all moving parts move without binding. Are they greased or siliconed to prevent binding?
3. Ensure all electronics are properly secured and shimmed correctly.
4. Turn on the switch of the receiver and transmitters, and make sure whether the steering servo linkages move without binding and that the electronic speed controller is working properly.
5. Check the radio batteries are fresh and make sure they are fresh enough to operate the model.
6. Check if there is someone on the same frequency.

### **IMPORTANT !!! Do not operate the Car under these situations !!!**

1. Near Children
2. Early morning and late night.
3. Near railroad tracks, streets, schools, or anywhere where people might get hit accidentally.
4. When the batteries of the transmitter and/or receiver are weak.
5. When the model car is behaving strangely due to other people on the same frequency or low voltage issues.

• ————— **CASTER** ————— •

27

### **Starting Procedures**

1. Make sure the batteries are fresh.
2. Turn on the switch of the transmitter and receiver.
3. Make sure the steering servo and e.s.c work normally and adjust them correctly.

### **Finishing Procedures**

1. Turn off the receiver and transmitter switch.
2. Remove batteries for storage and follow manufacturer recommendations for charging/discharging batteries.

### **Maintenance**

1. Before storing your car away, Wipe off dirt and oil and grease all moving parts.
2. Check for loose screws and parts and tighten them accordingly.

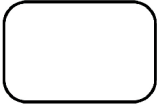
**CompetitionX**  
A WEB SITE FOR THE SERIOUS RAGER

• ————— **CASTER** ————— •

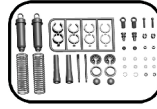
28



## Spare parts



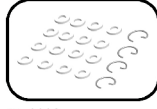
F8-0003  
F8T Caster Sticker Sheet



K8-0005  
Rear Shock Set



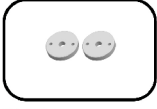
ZX-0007  
Rear Shock Body



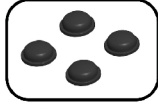
ZX-0008  
Shock Rebuilt Kit



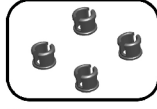
ZX-0010  
Rear Shock Shaft



ZX-0011  
Shock Piston 2-hole 1.5mm



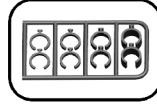
ZX-0013  
Shock Bladders



ZX-0014  
Shock Cap Bushing



ZX-0015  
Shock Shaft Ball End



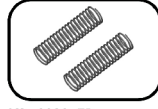
ZX-0016  
Shock Spring Adjuster Set



ZX-0017  
Shock Spring Cup Set  
(Up & Down)



ZX-0018  
Shock Boots



K8-0020-7B  
Shock Spring-Rear Blue  
1.7mm

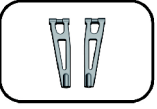


K8-0021-FR  
Front and Rear Lower  
Suspension Arms

CASTER

29

## Spare parts



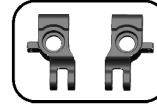
K8-0022  
Front Upper Suspension Arms



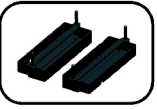
ZX-0023  
Gear Case x 2box



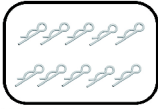
ZX-0025  
Front Steering Set Left & Right



ZX-0026  
Rear Hub Set



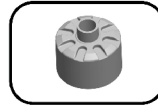
EX-0506  
Battery Box



EX-0506-10  
Battery Box Clips



ZX-0029  
Front Bumper



K8-0030  
Differential Case



EX-0502  
Receiver Box



K8-0033  
Chassis Brace Set  
(Front & Rear)



ZX-0034  
Wing Stay Set



CR8-0013-WH  
Wing Yellow



ZX-0035-01  
Caster Clip Spacer



ZX-0035  
Front Upper Sus. Hinge Pin Holder



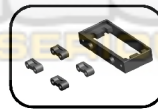
ZX-0036  
Front Steering Pivot Ball  
Bushing



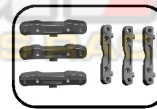
ZX-0037  
Fuel Tank Post Set



K8-0038  
Front & Rear Body Mount



ZX-0039  
Steering Servo Mount



ZX-0040  
Front & Rear Toe-In Set  
1, 2, 3 degree

30

CASTER

## Spare parts



ZX-0041  
Front/Rear Toe-In adjuster



ZX-0042  
Rear Upper Arm - Ball  
End 7mm



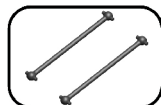
ZX-0043  
Sway Bar Mount - Ball  
End 3mm



K8-0044  
F&R CVD



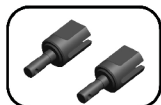
K8-0045  
Front Center & Rear Center  
Drive Shaft



K8-0046  
Rear Drive shaft



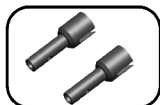
K8-0047  
Diff. Drive



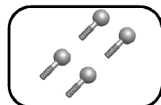
K8-0048  
Center Diff. Out Drive  
(Flat Face)



K8-0049  
Drive Joint



K8-0050  
Rear Wheel Axle



ZX-0053  
14mm Steering Pivot Ball



ZX-0054  
Steering Servo Saver Post



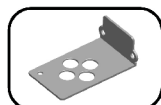
ZX-0055  
Servo Saver Full Set



ZX-0055-P  
Servo Saver Plastic parts



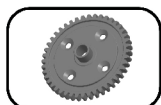
ZX-0056  
Shock Bushing



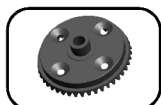
EX-0507  
ESC Control Holder



JR-0138  
Rear Upper Suspension  
Turnbuckle



K8-0059  
62T Steel Spur Gear



K8-0060  
43T Diff Gear

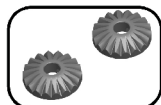


ZX-0061  
13T Pinion Gear

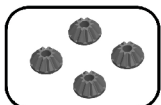
CASTER

31

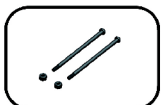
## Spare parts



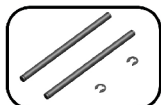
K8-0062  
20T Diff Bevel Gear



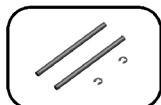
K8-0063  
10T Diff Bevel Gear



JR-0076  
Front Lower Suspension  
Hinge Pin



ZX-0065  
Front Upper Suspension  
Hinge Pin



K8-0066  
Rear Hub Hinge Pin



ZX-0067  
Diff. Bevel Gear Shaft



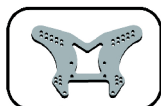
F8-0511-PRO  
CNC Main Chassis



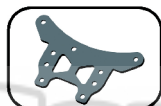
F8-0510-RTR  
Main Chassis



F8PT-07  
Front Shock Tower 7075



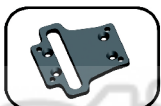
F8PT-08  
Rear Shock Tower 7075



F8PT-24  
Front Support Plate 7075



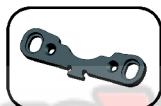
ZX-0072  
Steering Plate 6061



F8-0073  
Center Diff. Support Plate



ZXOP-19  
Front Suspension Arm Holder



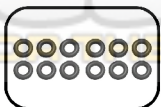
ZXOP-20  
Rear Suspension Arm Holder



K8-0077  
Wheel Hub and Nut



K8-0078  
5x1.5mm Diff. O-Ring



ZX-0079  
3x1.5mm Diff. O-Ring



K8-0080  
Diff. Washer Large

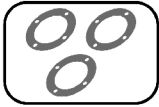


ZX-0081  
Diff. Washer Small

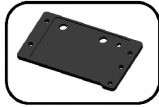
CASTER

32

## Spare parts



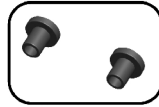
ZX-0082  
Diff. Gasket



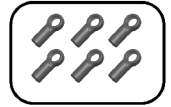
F8-0503  
Radio Plate



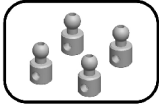
ZX-0084  
Steering Ball End



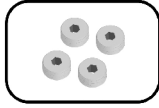
ZX-0086  
Servo Saver Arm Bushing



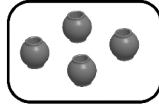
ZX-0087  
Servo Ball End 6mm (plastic)



ZX-0089  
Stabilizer Ball 6mm



ZX-0090  
Cup Holder Busing



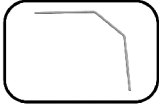
ZX-0091  
Ball 6mm



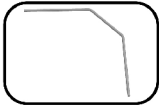
K8-0092  
Diff. Pin



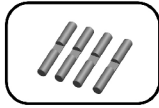
ZX-0093  
Sway Bar Plate (plastic)



K8-0094  
Front Sway Bar 2.3mm



K8-0095  
Rear Sway Bar 2.8mm



K8-0100  
Wheel Hub Pin



JR-0135  
7mm Steering ball



ZX-0104  
Servo Horn Convert F, K, H, S.

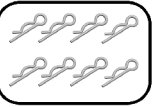


JR-134  
Steering Ball End  
Plastics New 7mm

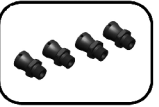
CASTER

33

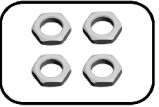
## Spare parts



ZX-0108  
Body Pin



K8-0110  
Wheel Hub



ZX-0111  
Wheel Nut



ZX-0112  
E-Clips 3mm



ZX-0113  
Wing Stay Spacer



K8-0102  
1/8 Buggy Tire (Square)



K8-0101  
Wheel



ZXOP-09  
Rear Brack Holder ( Option )



EX-0501  
13T Gear



F8-0504  
Motor mount



F8-0504-10  
Truggy Motor Engine  
Support



EX-0501-10  
12T Gear



34

CASTER



## Blank Setup Sheet

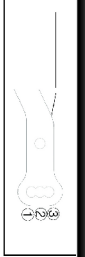
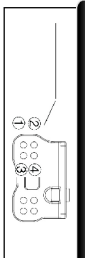
Name: \_\_\_\_\_ Date: \_\_\_\_\_  
 Track: \_\_\_\_\_ Weather: \_\_\_\_\_

Track Width: \_\_\_\_\_ mm  
 Camber Angle: \_\_\_\_\_ °  
 Upper Arm Spacer: \_\_\_\_\_ mm  
 Toe Angle: \_\_\_\_\_ °  
 Rebound Stop: \_\_\_\_\_ mm  
 Anti-roll Bar:  Use \_\_\_\_\_ mm  
 None  
 Lower Arm Mount (Klick Up): \_\_\_\_\_ °  
 Upper Arm Position: Z1-0041  
    
 Lower Arm spacer: \_\_\_\_\_ mm

Piston: \_\_\_\_\_  
 Oil: \_\_\_\_\_  
 Spring: \_\_\_\_\_  
 Spacer: \_\_\_\_\_ mm  
 Shock Position: \_\_\_\_\_

Upper Arm Position: \_\_\_\_\_  
 Rebound Stop: \_\_\_\_\_ mm  
 Anti-roll Bar:  Use \_\_\_\_\_ mm  
 None  
 Wheelbase Adjustment \_\_\_\_\_ mm  
 Upper Arm Position: \_\_\_\_\_

Piston: \_\_\_\_\_  
 Oil: \_\_\_\_\_  
 Spring: \_\_\_\_\_  
 Spacer: \_\_\_\_\_ mm  
 Shock Position: \_\_\_\_\_



\_\_\_\_\_

\_\_\_\_\_

\_\_\_\_\_

\_\_\_\_\_

Front: # \_\_\_\_\_ O-Ring \_\_\_\_\_ pcs.  
 Center: # \_\_\_\_\_ O-Ring \_\_\_\_\_ pcs.  
 Rear: # \_\_\_\_\_ O-Ring \_\_\_\_\_ pcs.

Front: Type: \_\_\_\_\_ Rm: \_\_\_\_\_  
 Inset: \_\_\_\_\_

Race Time / Laps: \_\_\_\_\_  
 Position in Race: \_\_\_\_\_  
 Best lap: \_\_\_\_\_

# CompetitionX

A WEB SITE FOR THE SERIOUS RAGER